

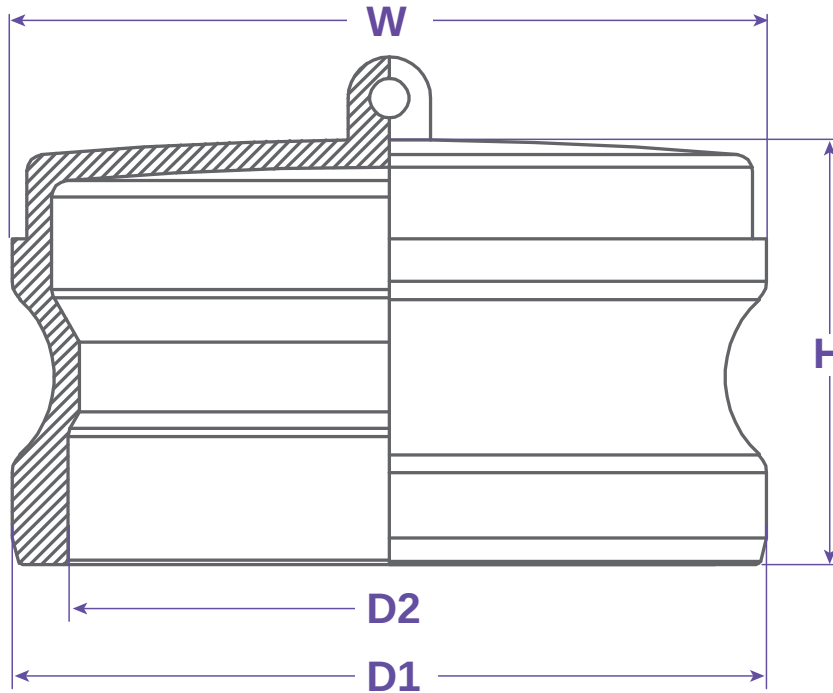


SEALFAST
THE SIMPLE SOLUTION

**COUPLINGS
& ACCESSORIES**



TYPE DP



- NOT DESIGNED FOR PRESSURE APPLICATIONS -

FEATURES & APPLICATIONS:

• General Uses:

A camlock fitting is a type of coupling that is used to connecting hose and or pipes together that transfers liquids, powders and granules. A straight through connection is made that maintains the pipe size and allows the free flow of materials being transferred.

Size	Working PSI	D1	D2	W	H	PART #
1/2"	0					DP050IBR
3/4"	0	1.264	1.032	1.264	1.299	DP075IBR
1"	0	1.445	1.142	1.445	1.339	DP100IBR
1-1/4"	0	1.791	1.339	1.791	1.654	DP125IBR
1-1/2"	0	2.102	1.689	2.102	1.634	DP150IBR
2"	0	2.480	2.063	2.480	1.890	DP200IBR
2-1/2"						DP250IBR
3"	0	3.602	3.201	3.602	2.028	DP300IBR
4"	0	4.705	4.303	4.705	2.087	DP400IBR
5"	0	5.728	5.311	5.728	2.087	DP500IBR
6"	0	6.929	6.358	6.929	2.520	DP600IBR

WARNING: Cam & Groove Couplings should **NOT** be used with any compressed gas, including steam or air. Metal fittings should **NOT** be used with Polypropylene Cam & Groove. Dust Caps and Dust Plugs are **NOT** designed for pressure applications.

Note: All Seal Fast Cam & Groove Stainless Bodies are 316 Investment with 304 Handles.

TITLE **TYPE DP - DUST PLUG**

DISCLAIMER

All drawings and specifications are subject to change without notice. Drawings represent general dimensions of our products. Seal Fast cannot guarantee the dimensions in the drawing will exactly match those in the drawing. This drawing is the property of Seal Fast Inc. Copying or reproduction of this drawing is expressly prohibited.

MATERIAL

BRASS

DRAWING NOT TO SCALE

PART

DP...IBR



sales@sealfast.com

800.231.0734

sealfast.com

5603 Harvey Wilson Drive, Houston, TX 77020